

PLEASE CHECK WWW.MOLEX.COM FOR LATEST PART INFORMATION

Part Number: [0676730001](#)
Status: **Active**
Description: 0.80mm (.031") Pitch I/O Receptacle, Surface Mount, Right Angle, 14 Circuits

Documents:

[3D Model](#) [RoHS Certificate of Compliance \(PDF\)](#)
[Drawing \(PDF\)](#)

General

Product Family	I/O Connectors
Series	67673
Application	Wire-to-Board
Component Type	Receptacle
Product Name	N/A
Type	N/A

Physical

Boot Color	N/A
Circuits (Loaded)	14
Circuits (maximum)	14
Gender	Receptacle
Lock to Mating Part	None
Material - Plating Mating	Gold
Material - Plating Termination	Tin-Lead
Number of Rows	1
Orientation	Right Angle
PCB Locator	Yes
PCB Retention	Yes
PCB Thickness Recommended (in)	0.047 In
PCB Thickness Recommended (mm)	1.20 mm
Packaging Type	Embossed Tape on Reel
Panel Mount	No
Pitch - Mating Interface (in)	0.031 In
Pitch - Mating Interface (mm)	0.80 mm
Pitch - Term. Interface (in)	0.031 In
Pitch - Term. Interface (mm)	0.80 mm
Plating min: Mating (µin)	10
Plating min: Mating (µm)	0.25
Polarized to Mating Part	Yes
Polarized to PCB	Yes
Ports	1
Surface Mount Compatible (SMC)	Yes
Temperature Range - Operating	-40°C to +85°C
Termination Interface: Style	Surface Mount
Waterproof / Dustproof	No

Electrical

Current - Maximum per Contact	1.5A
Shield Type	Full Shield
Shielded	Yes
Voltage - Maximum	200V AC (RMS)

Material Info

Reference - Drawing Numbers

Sales Drawing	SD-67673-001
---------------	--------------

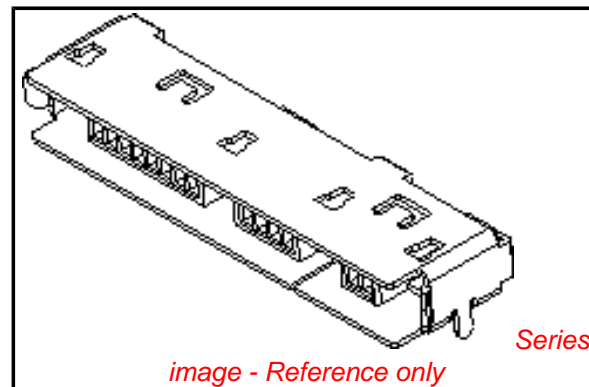


image - Reference only

EU RoHS

Not RoHS Compliant
REACH SVHC
Not Reviewed
Halogen-Free
Status
Not Reviewed

China RoHS



Need more information on product environmental compliance?

Email productcompliance@molex.com
 For a multiple part number RoHS Certificate of Compliance, [click here](#)

Please visit the [Contact Us](#) section for any non-product compliance questions.

Search Parts in this Series

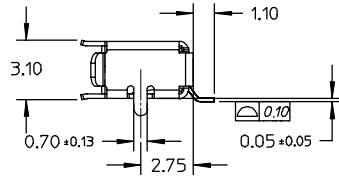
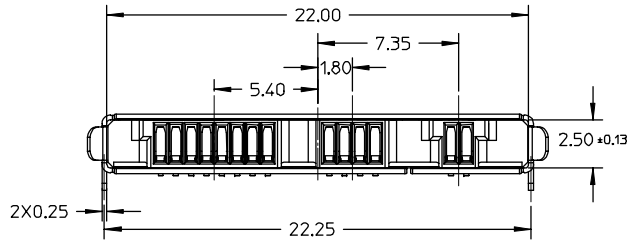
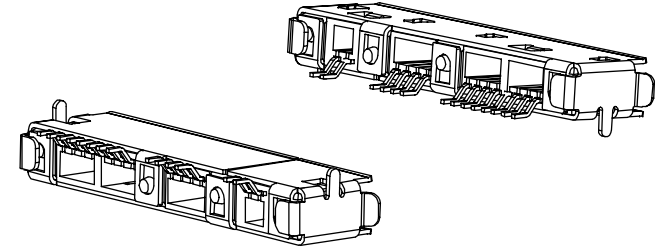
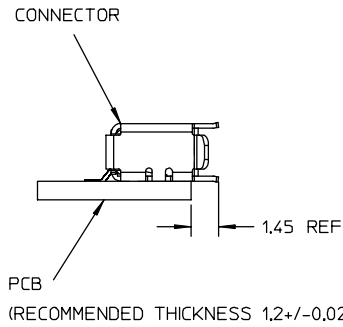
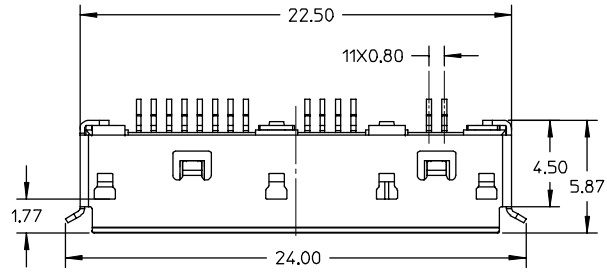
67673Series

Mates With

67674

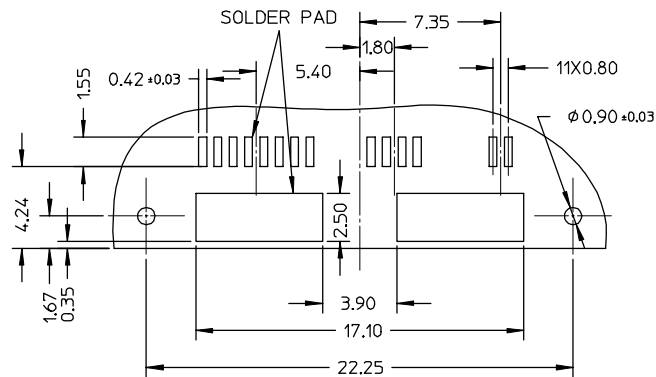
This document was generated on 04/05/2010

PLEASE CHECK WWW.MOLEX.COM FOR LATEST PART INFORMATION



- NOTES:
- MATERIAL:
HOUSING:HIGH TEMPERATURE THERMOPLASTIC
UL94V-0,COLOR:BLACK
TERMIAL:COPPER ALLOY
SHELL:STAINLESS STEEL
 - FINISH:
TERMINAL:SELECTIVE GOLD ON CONATCT AREA 0.25um
MIN OVER PALLADIUM NICKEL 1.00um MIN,
SELECTIVE TIN/LEAD ON SOLDER TAIL AREA,3.75um
MIN,BOTH OVER NICKEL,1.25um OVERALL;
SHELL:GOLD FLASH OVER NICKEL 1.25um MIN OVERALL
 - PRODUCT SPECIFICATION REFER TO PS-67673-002
 - PRODUCT PACKING REFER TO PK-67673-001

- NOTES:
- RECOMMENDED PCB LAYOUT,PCB THICKNESS:1.20+/-0.02mm
 - UNDEFINED TOLERANCE IS +/-0.05mm



NEW RELEASE EC NO: T2003-0100 DRWN: QJHAO 2002/11/19 CHK: CHIK APPR: SHUANG 2002/11/20	QUALITY SYMBOLS ▽ -0 ▽ -0	GENERAL TOLERANCES (UNLESS SPECIFIED)		SCALE 3:1	DESIGN UNITS METRIC	THIRD ANGLE PROJECTION	REVISE ON CAD ONLY
		mm	INCH	DIMENSION STYLE		TITLE	
		4 PLACES ± ---	± ---	MM ONLY		0.8MM PITCH 14PINS RECEPTACLE CONN	
		3 PLACES ± ---	± ---	DRAWN BY QJHAO	DATE 2002/11/09	MOLEX INCORPORATED	
2 PLACES ± 0.15	± ---	ANGULAR ± .5 °		CHECKED BY JLU	DATE 2002/11/09	MATERIAL NO. 676730001	DOCUMENT NO. SD-67673-001
1 PLACE ± 0.25	± ---	DRAFT WHERE APPLICABLE		APPROVED BY SHUANG	DATE 2002/11/09	SHEET NO. 1 OF 1	
MUST REMAIN WITHIN DIMENSIONS		THIS DRAWING CONTAINS INFORMATION THAT IS PROPRIETARY TO MOLEX INCORPORATED AND SHOULD NOT BE USED WITHOUT WRITTEN PERMISSION					